

# SAP PP/QM Configuration Pack

Published by Team of SAP  
Consultants at SAPTOPJOBS

Visit us at [www.sap-topjobs.com](http://www.sap-topjobs.com)

*Copyright 2010-12 SAPTOPJOBS*

**All rights reserved. No part of this publication may be reproduced, stored in a retrieval system, or transmitted in any form, or by any means electronic or mechanical including photocopying, recording or any information storage and retrieval system without permission in writing from SAPTOPJOBS**

Hello Everyone,

A Warm Welcome To You All! We are really excited to offer the complete SAP PP/QM configuration pack to the SAP community. This was a much-awaited pack and we are happy to present that to you... As you are aware that our SAP FICO, SD and MM/WM have already achieved the best selling status and have received lots of accolades and really helped the consultants take their SAP knowledge and career to the next level ...I am very confident that PP/QM configuration package will go a step forward and do much more than that.....

For those who have been on our list and who have bought from us earlier you all know that we have over-delivered on each of our configuration packs and we want to do the same thing with SAP PP/QM config pack too... For those who have visited our site for the first time I would like to welcome you to our site and promise you that we would do our best to ensure that your life at the clients place would be very comfortable...

What I have done here is given you a brief of around 74+ pages of content in PP pack and around 16 pages of QM Pack below so that you can have a feel of what it would be like in terms of structure. The whole pack is extremely voluminous, step by step guide this is just a feeler... So I hope you enjoy this.... So lets dive right in....

# SAMPLE QM CONFIGURATION

## INDEX

INDEX.....	2
1. Quality Management:- .....	3
2. Maintain settings at Plant level .....	7
3. Define control key .....	13

## 1. Quality Management:-

Quality Management has often been a sort after skill in SAP and it compliments the PP Module. In this document and the next we will focus on the Quality Management Module which will increase your job opportunities and diversify your SAP skills. So here we go.

Quality Management Module deals with all the traditional functions of Quality in an organization. It is a kind of add on Module and may be implemented at the beginning itself or it may also be implemented after go-live.

There are six major components in Quality Management module. They are:

- 🕒 Basic data and settings at Plant level
- 🕒 Quality in Procurement
- 🕒 Quality Planning
- 🕒 Quality Inspection
- 🕒 Quality certificate
- 🕒 Quality Notification

Basic data settings:-

Common required configuration settings across the QM module are defined here. Certain settings (like selected set, code and code group, inspection point) can be defined at plant level in addition to the other level where it is available.

QM Module plant level control data are defined in this setting.

- a) Version control for Master Inspection characteristics and Inspection Method
- b) Time duration for automatic UD

Quality in Procurement:-

Quality control over the procurement activities like

- a) Controlling payment
- b) Restricting vendor supply
- c) Control on source inspection
- d) Control if certificates are not received

Quality Master Data:-

Master Data are essential to perform transactions. To create master data, certain configuration settings which are listed below.

- ❑ Master Inspection Characteristics creation,
- ❑ Codes in QM
- ❑ Sampling procedure

- Task list type to material type for inspection

Quality Inspection:-

Appropriate type of inspection lot creation with respect to different movements is defined in this setting.

Apart from the above control of inspection type creation, other below settings are done

- Inspection type definition
- Default setting for inspection type
- Inspection control for movement types
- Defining Physical sample parameters
- Result recording configuration

Quality certificate:-

Type of Quality certificate, source from where the data are to be picked up, Lots to which lots certificates are allowed to be printed are described in this settings.

It is mainly defined through

- Certificate profile
- Certificate form

Quality Notification:-

Quality notification is the process of informing about the deviation to the respective persons. There can be different notification types for different purposes.

Settings defined here are

☑ Notification type

☑ Screen control

## 2. Maintain settings at Plant level

### BACKGROUND

When QM module is to be implemented, plant level settings are needed to be maintained. Following setting at plant level can be managed through this setting.

- 🕒 Version control for Master Inspection characteristics and Inspection method,
- 🕒 Plant level sampling procedure
- 🕒 Code and selected set at plant level for valuation
- 🕒 Automatic usage decision waiting time

### SCENARIO

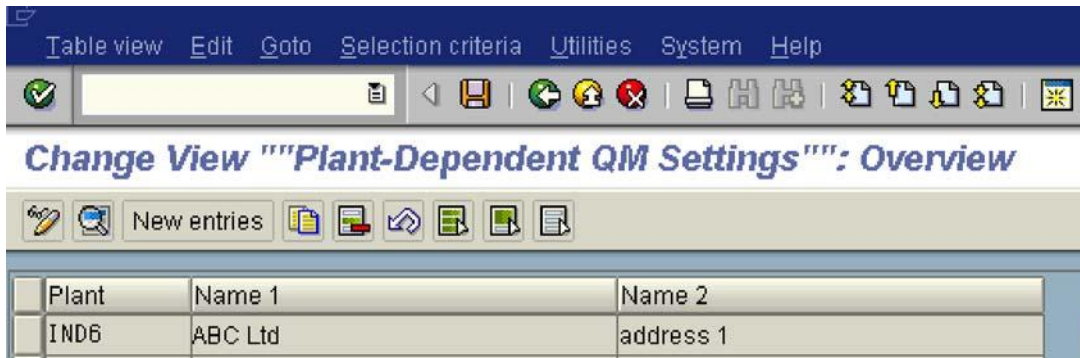
Maintain Plant parameter of QM setting for plant IND6. It is required to maintain Plant level UD code and waiting time for automatic UD.

### INSTRUCTIONS

Follow the Menu Path: IMG    Quality Management    Basic settings    Maintain settings at plant level.

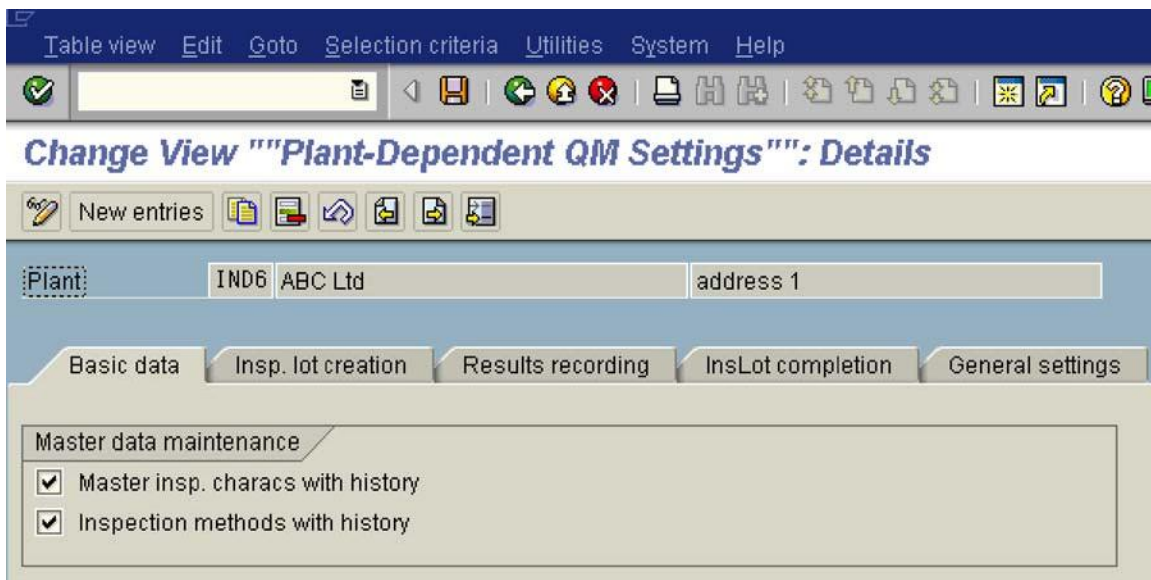
Click 📁

Select plant IND6



Click 

Note:- Default settings are sufficient to do with QM module. However important settings along with the screen shots are explained below.

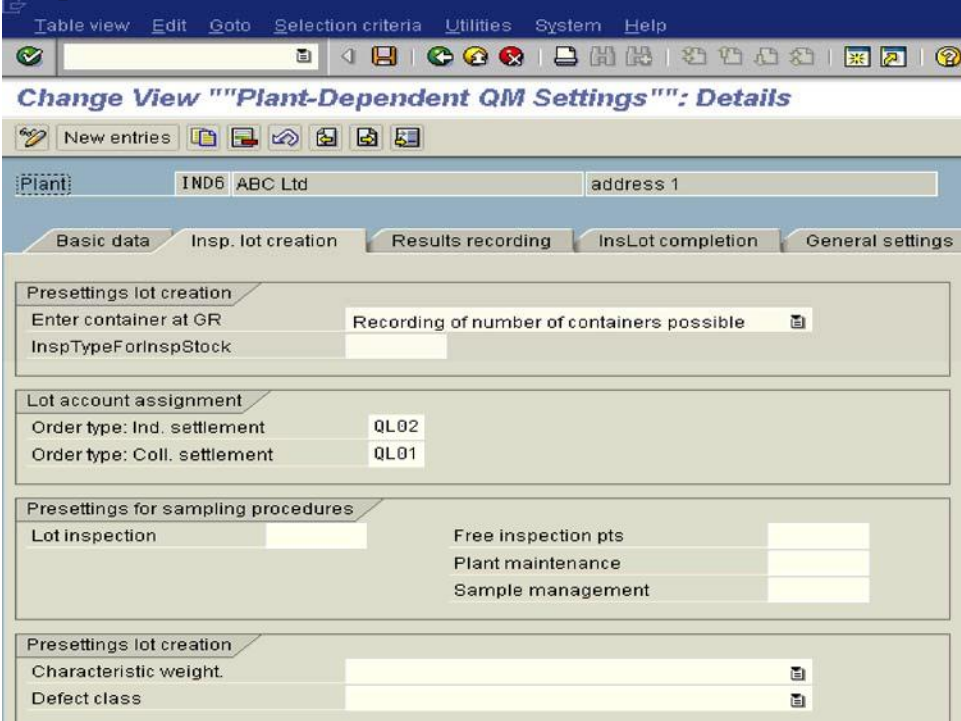


Update the Following fields

Field	Description
<input checked="" type="checkbox"/> Master insp. characs with history	Tick in this check box will assign version to the Master Inspection Characteristics automatically during creation and change.
<input checked="" type="checkbox"/> Inspection methods with history	Tick in this check box will assign version to the Inspection method

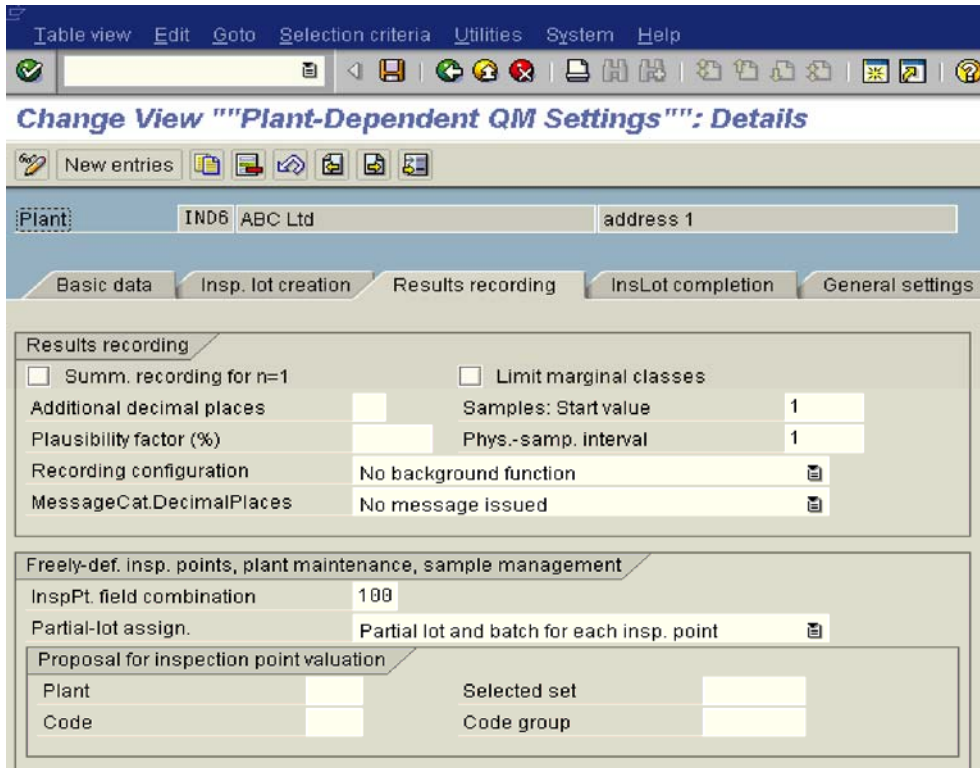
automatically during creation and change.

### Insp.Lot creation Tab screen



No settings are to be done here.


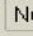



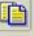
### Result recording Tab screen



No settings are to be done here. At plant level any specific selected set is to be used, that may be mentioned here in Plant, Selected set, code and code group columns.

InsLot completion Tab screen


**Change View ""Plant-Dependent QM Settings"": Details**

New entries      

Plant

Basic data | Insp. lot creation | Results recording | **InsLot completion** | General settings

**Inventory postings**

Controlling area  Cost center: Scrap   
 Cost center: Destroyed  

Stor. loc. for reserves

**Automatic usage decision**

Delay time for skip lot   
 Waiting time (hrs)  Waiting time (mins)

**Batch valuation**


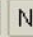




Batch valuation without material spec.

To configure Automatic Usage decision Waiting time may be mentioned. Once this time elapses, Automatic UD will be done.

Batch Valuation check box to be ticked, if batch updating is to be done without material specification.

General settings Tab screen

**Change View ""Plant-Dependent QM Settings"": Details**

New entries      

Plant

Basic data | Insp. lot creation | Results recording | InsLot completion | **General settings**

**General settings**

Selection time period  Days

No settings are to be done here.

Click Save .

## Impact of this configuration in Master Data / Transaction

Over all maintenance of the above will control,

- ⌚ Automatic creation of versions for MIC during creation and change
- ⌚ Selected set at plant level may be used during result recording
- ⌚ Automatic usage time elapse duration may be mentioned here
- ⌚ Control to update Batch classification while taking UD with or without material specification

### 3. Define control key

#### BACKGROUND

Functions of

Control of payment to vendor

Blocking the vendor

Test Certificate requirement

Source inspection control

are maintained through control key settings.

#### SCENARIO

Create a control key to

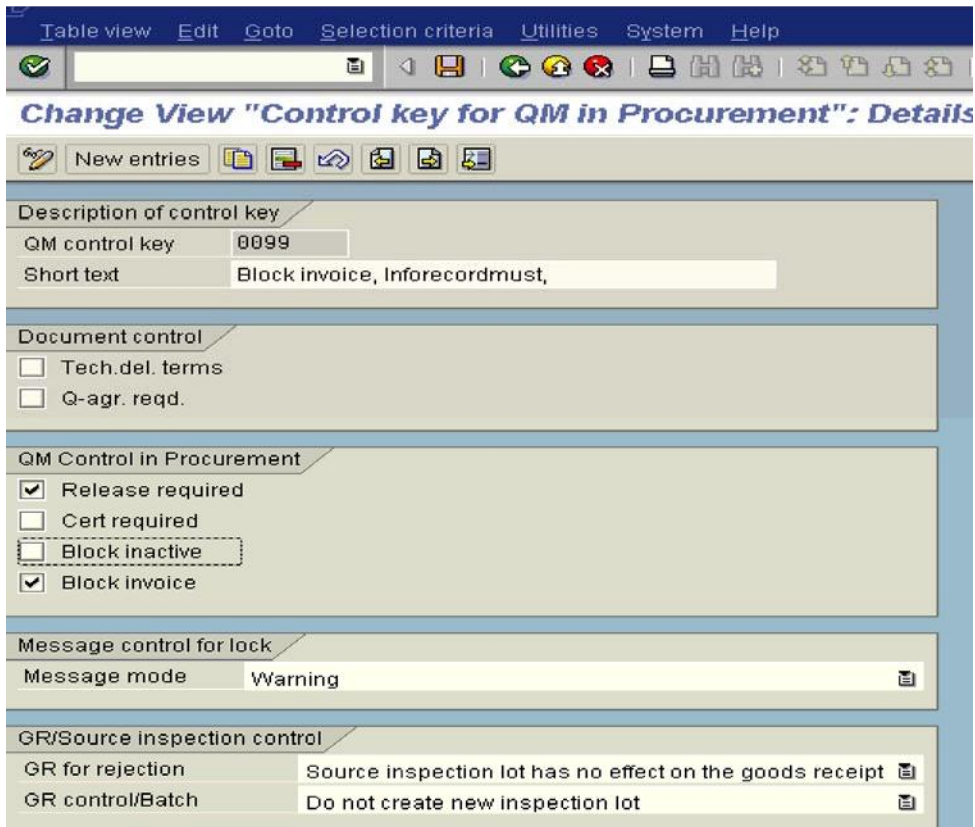
- Block invoice payment till UD is taken,
- Make Quality info record as mandatory

#### INSTRUCTIONS

Follow the Menu Path: IMG      Quality Management      QM in  
Logistics      QM in procurement      Define control keys

Click 

Click 



### Update the Following fields

Field	Description
Control Key	Key identifying the control key. E.g 0099
Description	Description of the control key
QM Control – Release Required	To make the QM info record as mandatory.
Block Invoice Check box	To block the invoice till UD is made.
Source Inspection control GR for rejection	If the source inspection lot is rejected, what should system do? You can ignore it, create new inspection lot though the previous lot at source inspection is rejected, or you can stop making GR if the lot is rejected. In this example select “Source inspection has no effect”

3R control/Batch	Whether to create new batch if batch of source inspection lot is not matching with the batch at the time of receipt.
------------------	--

Click Save .

### Impact of this configuration in Master Data / Transaction

Control key created here will be maintained in the QM view of material master to do the desired function of Blocking Invoice, and making Quality info record as mandatory.

When this key is maintained, it is mandatory to have QI infor record for Material, Vendor and Plant combination.

The above is only a sample presented to get the full SAP PP/QM pack with the entire configuration, end user documents and power point plus all the bonuses of PP Questions and Answers, Resume Builder, Networking Audio and the very special CO Product Costing and Million Dollar SAP PP-CO Integration report click on the below link

<http://www.sap-topjobs.com/SpecialPP/8431654645.html>

Your order will be shipped through FedEx and will reach you in 3 days time

Prosperity and Happiness Be onto You.

Take care and Have a Great Day.

<http://www.sap-topjobs.com/SpecialPP/8431654645.html>