

SAP FI

Asset Configuration

Published by Team of SAP Consultants at
SAPTOPJOBS

Visit us at www.sap-topjobs.com

Copyright 2005@SAPTOPJOBS

All rights reserved. No part of this publication may be reproduced, stored in a retrieval system, or transmitted in any form, or by any means electronic or mechanical including photocopying, recording or any information storage and retrieval system without permission in writing from SAPTOPJOBS.

**How to Configure
SAP Asset Accounting
In 14 Days**

Your Step by Step Guide
To a Fast Track SAP FI Career



TABLE OF CONTENTS

1. Organisational Structure.....	
2. Specify Description of Chart of Accounts/Delete Depreciation Areas.....	
3. Copy/Delete Depreciation Areas.....	
4. Assign Input Tax Indicator for Non-Taxable Acquisitions.....	
5. Assign Chart of Depreciation to Company Code.....	
6. Specify Number Assignment Across Company Codes.....	
7. Specify Account Determination.....	
8. Create Screen Layout Rules	
9. Define Number Range Interval.....	
10. Define Asset Classes	
11. Specify Chart-of-Dep.-Dependent Screen Layout/AcctAssignment.....	
B) Integration with the General Ledger	
12. Define How Depreciation Areas Post to General Ledgers.....	
13. Assign G/L Accounts	
14. Specify Financial Statement Version for Asset Reports	
15. Specify Document Type for Posting of Depreciation	
16. Specify Intervals and Posting Rules	
C) Valuation	
17. Define Depreciation Areas	
18. Specify Transfer of APC Values.....	
19. Specify Transfer of Depreciation Terms.....	
20. Determine Depreciation Areas in the Asset Class.....	
21. Specify Max. Amount for Low-Value Assets + Asset Classes (Optional)	
22. Specify Rounding of Net Book Value and/or Depreciation (Optional)	
23. Specify Changeover Amount (Optional).....	
24. Specify Memo Value (Optional).....	
25. Specify Other Versions on Company Code Level (Optional).....	
26. Specify Other Versions on Depreciation Area Level (Optional).....	
27. Define Depreciation Areas for Foreign Currencies (Optional)	
28. Specify the Use of Parallel Currencies (Optional)	
28. Specify Depreciation Areas for Group Assets (Optional).....	
29. Specify Asset Classes for Group Assets (Optional)	
D) Depreciation.....	
30. Determine Depreciation Areas for Special depreciation.....	
31. Calculate Ordinary Depreciation before Special Depreciation.....	
32. Determine Depreciation Areas for Unplanned Depreciation.....	
E) Configuring the depreciation key	
33. Define Base Methods	
34. Define Declining-Balance Methods (Optional).....	
35. Define Maximum Amount Methods (Optional).....	
36. Define Multi-Level Methods (Important)	
37. Maintain Period Control Methods	
38. Maintain Depreciation Key	
39. Define the Cutoff Value Key (Optional)	

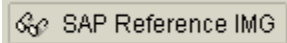
40. Define Maximum Base Value (Optional)	
F) Special Valuation.....	
41. Specify Gross or Net Procedure.....	
42. Assign Accounts.....	
G) Master data	
43. Define Screen Layout for Asset Master Data	
44. Define Screen Layout for Asset Depreciation Areas	
H) Information system.....	
45. Define or Assign Forms.....	
IMG → Asset Accounting → Information System → Define or Assign Forms	
H) Asset data transfer	
45. Specify Transfer Date/Last Closed Fiscal Year.....	
46. Specify Last Period Posted in Prv.System (Transf.During FY).....	
47. Create/Change/Display Legacy Asset.....	
I) Preparing for Production Startup	
48. Transfer Balances	
49. Activate Company Code.....	

SAMPLE PREVIEW

A) Organizational Structures

For doing the configuration we use the following path on the SAP application screen:-

SAP Menu → Tools → AcceleratedSAP → Customizing → SPRO - Edit Project →



Configuration for all the modules will be done here. The above path will not refer henceforth; we will directly refer to the IMG node.

1. Copy Reference Chart of Depreciation/Depreciation areas

IMG → Financial Accounting → Asset Accounting → Organizational Structures → Copy Reference Chart of Depreciation/Depreciation Areas

The chart of depreciation is a list of depreciation areas arranged according to business and legal requirements. The chart of depreciation enables you to manage all rules for the valuation of assets in a particular country.

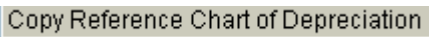
You must assign a chart of depreciation to each company code that is defined in Asset Accounting. SAP provides country-specific charts of depreciation with predefined depreciation areas. These charts of depreciation serve only as a reference for creating your own charts of depreciation, and are therefore not directly accessible in the SAP system. When creating a chart of depreciation, you have to copy the reference chart of depreciation.

When you create a chart of depreciation, the system copies **all** of the depreciation areas in the reference chart of depreciation. You have to delete any depreciation areas that you do not need in your chart of depreciation.

Depreciation areas that are not used can still be activated at a later point in time (after the production startup). A newly activated depreciation area can take over values from another depreciation area.

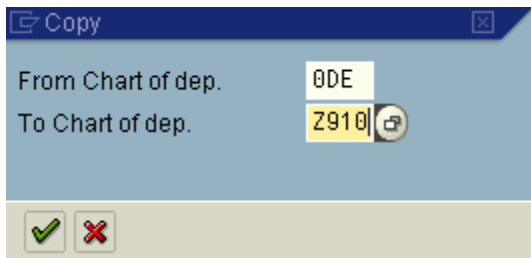
SAP has provided chart of depreciation for various countries. We will use the German chart of depreciation.

Let us copy the chart of depreciation from German chart of depreciation to create new chart of depreciation.

Double Click on 

Click on  and update the following: -

ODE – Sample chart of depreciation for Germany.



2. Specify Description of chart of accounts/Delete depreciation areas

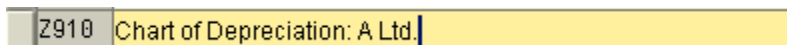
IMG → Financial Accounting → Asset Accounting → Organizational Structures → Copy Reference Chart of Depreciation/Depreciation Areas

Change the Description of chart of depreciation so copied.

Change the following: -



and update the following: -



Click on Save 

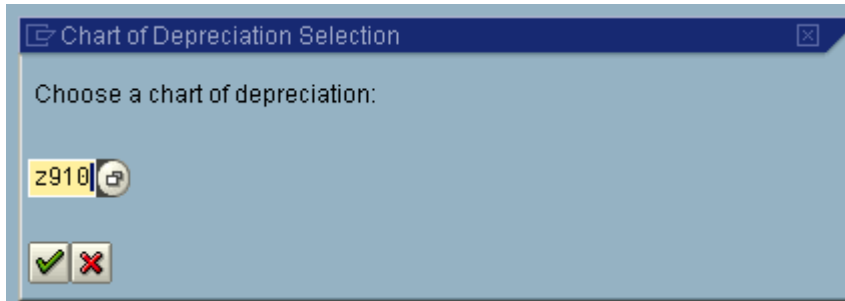
3. Copy/Delete Depreciation Areas

IMG → Financial Accounting → Asset Accounting → Organizational

Structures → Copy Reference Chart of Depreciation/Depreciation Areas

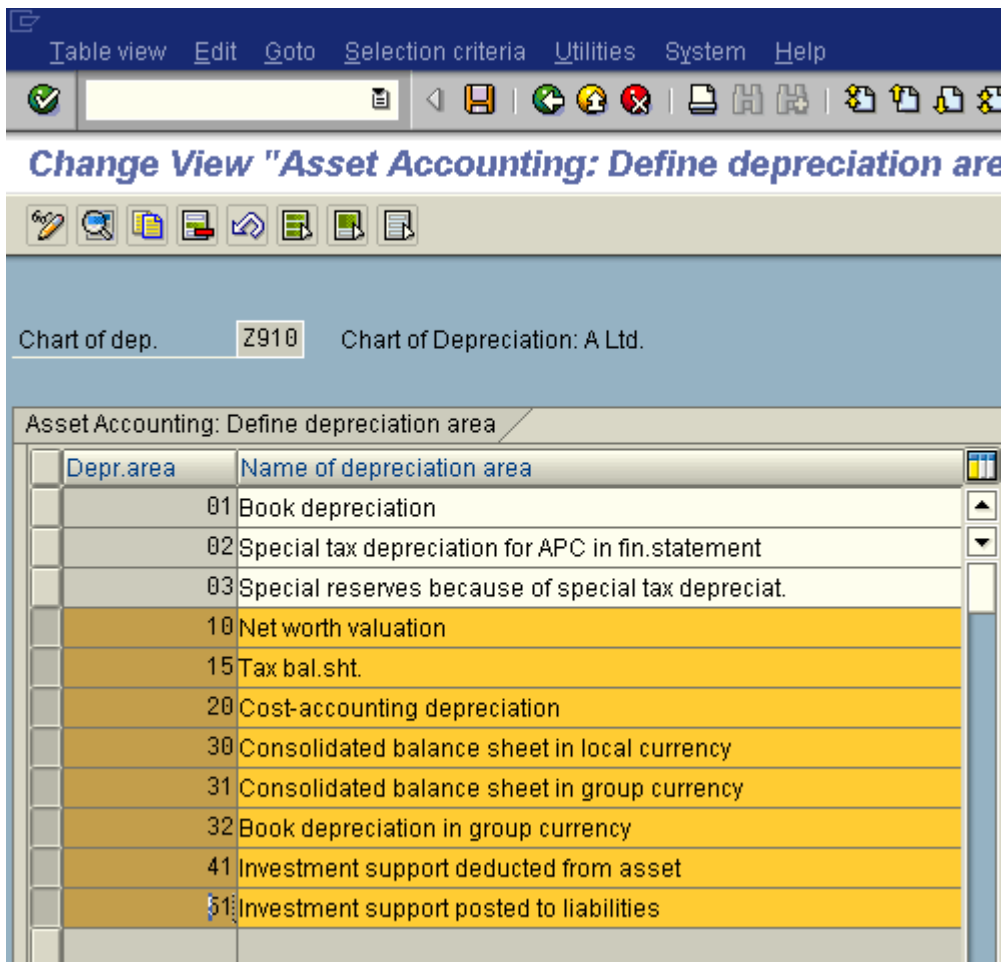
Double Click on Copy/Delete Depreciation Areas

And update the depreciation area



We will delete the unwanted depreciation areas which were copied from the reference chart of depreciation.

We select the areas for deletion like this



Then Click on 

We will delete deprec, area 10, 15, 20, 41,51

We require depreciation area 30 (Consolidated balance sheet in local currency) and depreciation area 32 since 2 additional currencies in SAR are configured in the FI-GL module.

Click on Save 

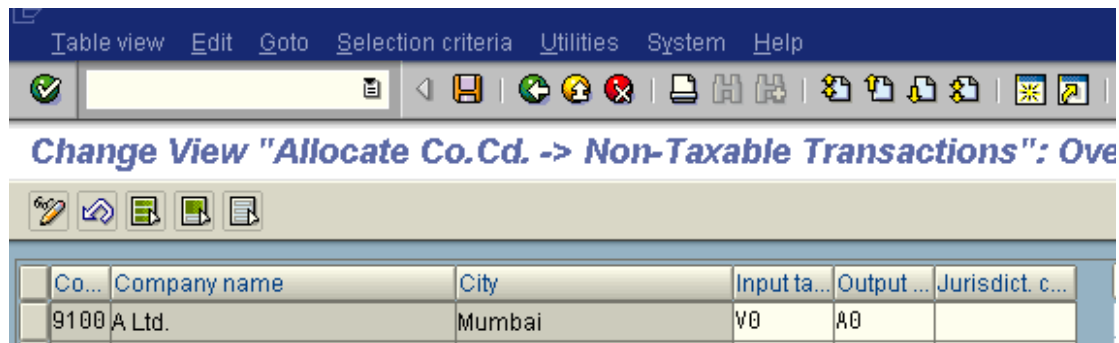
4. Assign Input Tax Indicator for Non-Taxable Acquisitions

IMG → Financial Accounting → Asset Accounting → Integration with the General Ledger → Assign Input Tax Indicator for Non-Taxable Acquisitions

In this step, you specify an input tax indicator per company code. The system then uses this indicator when you post acquisitions that are not subject to tax, but which are posted to accounts that are tax-relevant.

Assign input tax indicator V0 (Input tax 0%)

Assign output tax indicator A0 (output tax 0%) to company code 9100 A Ltd.



The screenshot shows a SAP table titled "Change View 'Allocate Co.Cd. -> Non-Taxable Transactions': Over". The table has the following columns: Co..., Company name, City, Input ta..., Output ..., and Jurisdict. c... The data row contains: 9100 A Ltd., Mumbai, V0, A0.

Co...	Company name	City	Input ta...	Output ...	Jurisdict. c...
9100	A Ltd.	Mumbai	V0	A0	

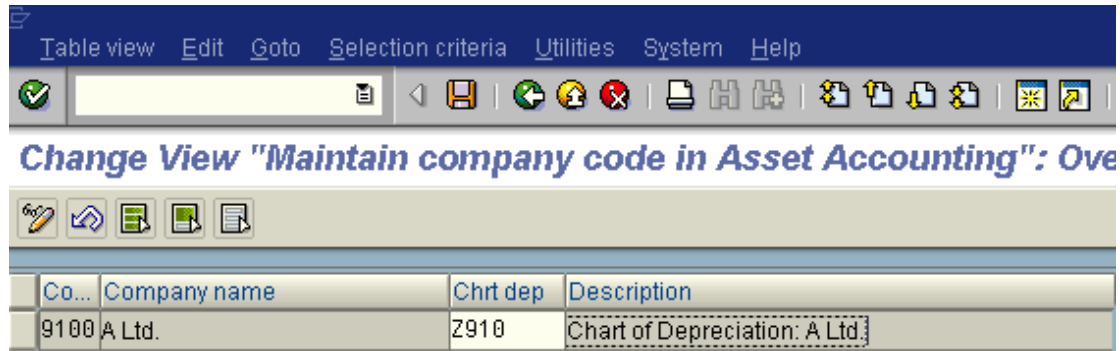
Click on Save 

5. Assign Chart of Depreciation to company code

IMG → Financial Accounting → Asset Accounting → Organizational Structures → Copy Reference Chart of Depreciation/Depreciation Areas

One of the important steps is the assignment of chart of depreciation to the company code. Here by this step, we link the asset accounting module to the FI company code.

Assign Chart of depreciation Z910 to company code 9100.



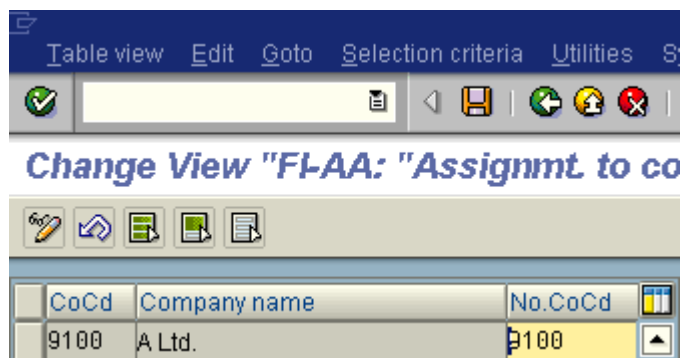
Click on Save 

6. Specify Number Assignment across Company codes (Optional)

IMG → Financial Accounting → Asset Accounting → Organizational Structures → Specify Number Assignment Across Company Codes

You can assign the main asset account number across company codes. Therefore, for every company code, you can determine from which (other) company code number assignment is to be carried out. In this step, you define a cross-company code assignment of the main asset number. If you do not want a cross-company code number assignment, you do not need to define any system settings here.

We do not want across company codes number range. So we do not anything here.




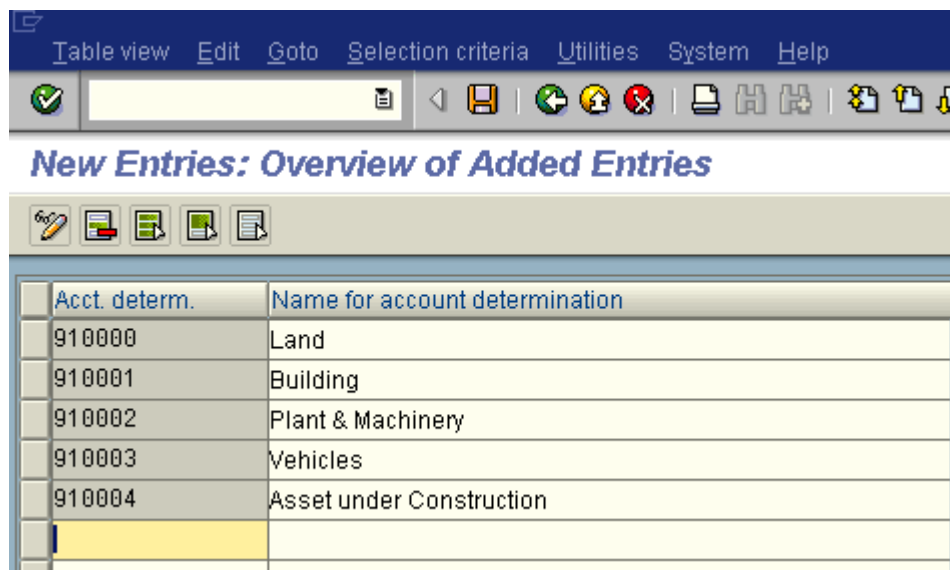
7. Specify Account Determination

IMG → Financial Accounting → Asset Accounting → Organizational Structures → Asset Classes → Specify Account Determination

The key of an account determination must be stored in the asset class. The account determination links an asset master record to the general ledger accounts to be posted for an accounting transaction using the asset class.

Usually, you need at least the same number of account determinations as you have asset balance sheet accounts in the general ledger

Click on  and update the following: -



Acct. determ.	Name for account determination
910000	Land
910001	Building
910002	Plant & Machinery
910003	Vehicles
910004	Asset under Construction

Click on Save 

8. Create Screen Layout Rules

IMG → Financial Accounting → Asset Accounting → Organizational Structures → Asset Classes → Create Screen Layout Rules

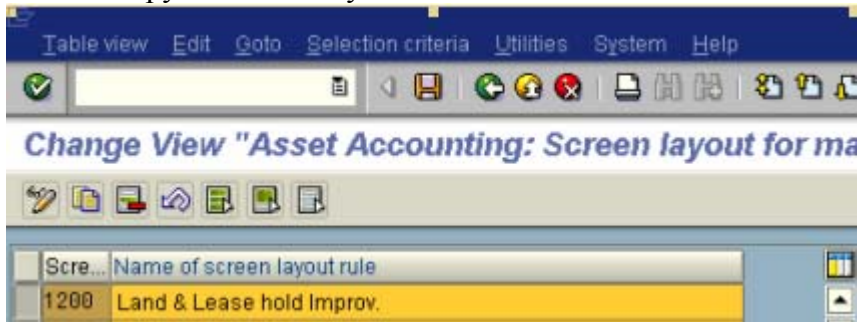
The screen layout specifies the status of the fields in the asset master record. You use the screen layout to determine if fields are required entry or optional entry fields, or if they are suppressed completely, for example.

In this step, you create only the keys and descriptions of the screen layout controls. You define the field group rules for the screen layouts themselves in the step Master data.

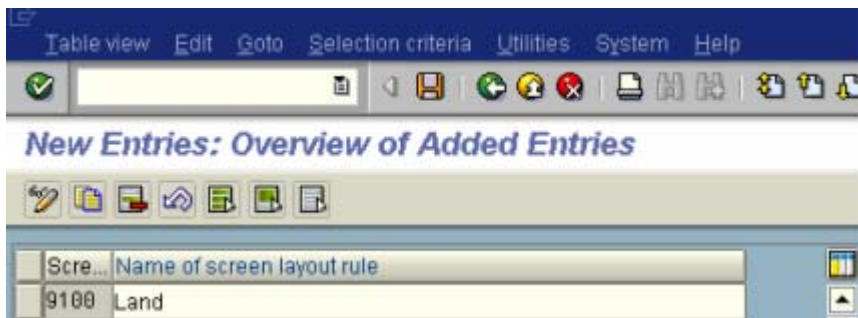
You can enter a screen layout rule in one of two places: either in the part of the asset class valid in the entire client, or in the part of the asset class valid for the chart of depreciation. The screen layout rule is then valid either for all assets in the asset class, or for all assets in the asset class/chart of depreciation.

You can use the standard screen layout or you can copy the standard screen layout to create new one.

We will copy the screen layout.



Click on  and update the following: -



Click on Save 

Similarly we will copy the screen layout for Buildings, Plant and Machinery, Vehicles and Asset under construction.

Get the full book by going to this link <http://www.sap-topjobs.com/SpecialPP/933.html>